

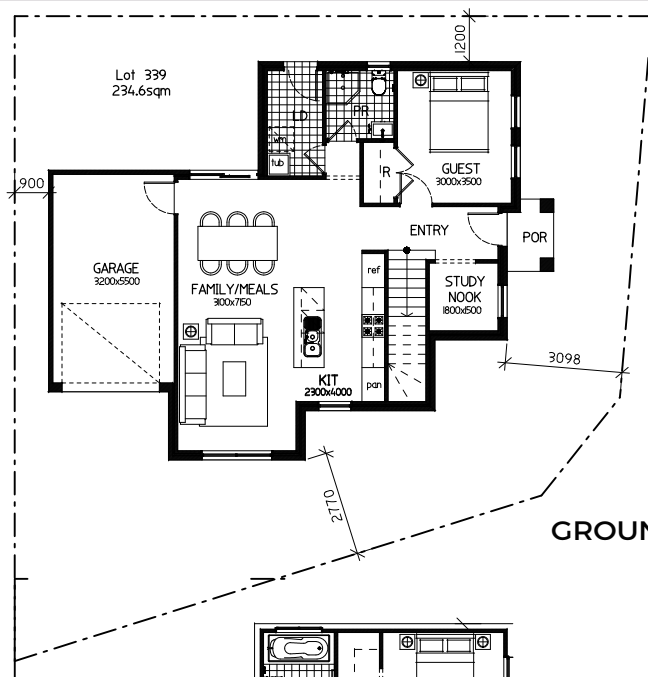
Lot 339

BARDIA at EDMONDSON PARK

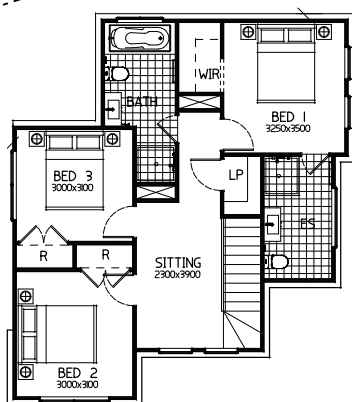
HOUSE AND
LAND PACKAGE



Illustrative purposes only



GROUND FLOOR PLAN



FIRST FLOOR PLAN

\$732,600

Modern | Stylish | Affordable

**Parkside Release, New Breeze
Edmondson Park**

- Modern Standard Inclusions
- 20mm stone benchtops in kitchen
- Dishwasher
- Soft close doors and drawers in kitchen
- Tiles to living areas and porch
- Carpets to bedrooms
- Wall hung vanities with 20mm stone in bathroom and ensuite
- 15 downlights
- Vertical Blinds
- 2590mm ceilings to ground floor
- Remote control panel lift door
- Ducted Air Conditioning
- Alarm system
- Flyscreens
- 'Coloured On' concrete driveway
- Letterbox and clothesline
- Soft landscaping
- Land size 234.60 m²
- House size 187.8 m² | 20.21 sq
- Land \$351,900.00 | House \$380,700.00

The content of this brochure was produced prior to planning approval, statutory approval and commencement of construction. Photographs and artist's impressions depicting the New Breeze estate and surrounding area and the interiors and exteriors are intended as a guide only and subject to change. Styling is indicative only and not provided. Information and images relating to the public park areas within and the surrounding park areas are indicative only. All outlines depicting areas are indicative only. Prospective purchasers should make their own enquiries. Correct as 11 April 2019